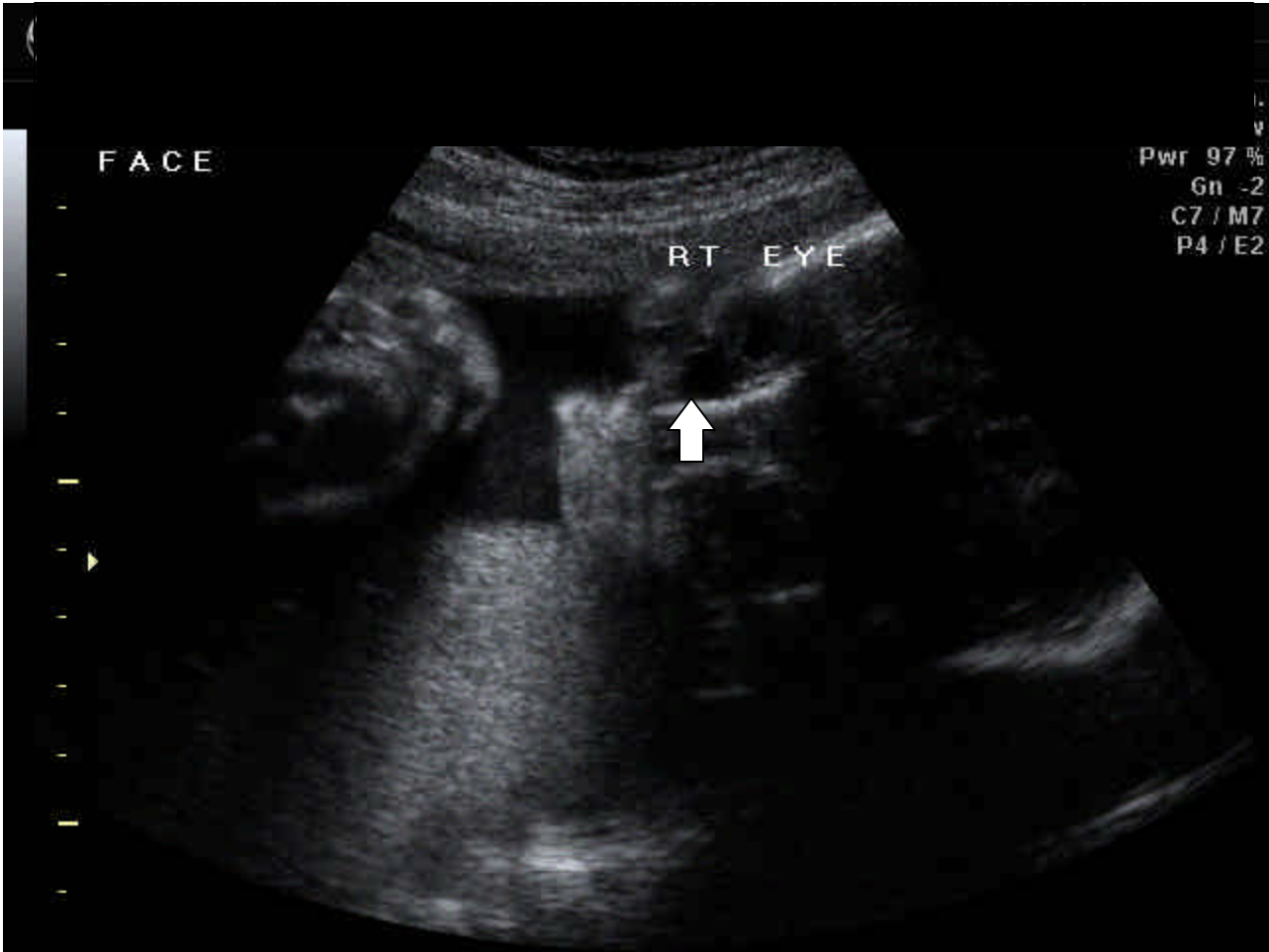
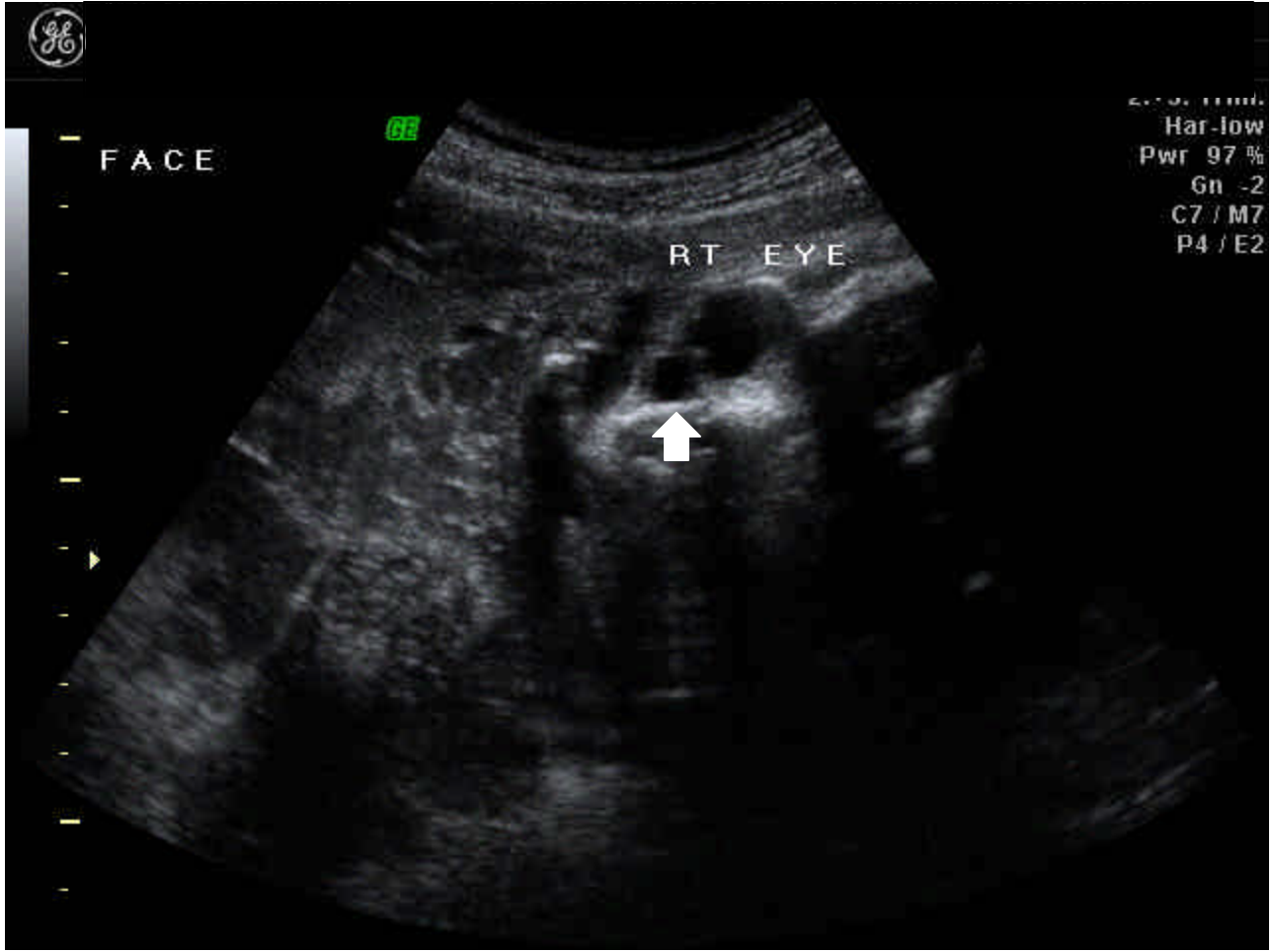


Case History

- Patient had a Level II ultrasound done at 18 weeks and was normal.
- She returned at 28 weeks 6 days for a growth scan for size greater than dates.
- Fetus growth was with normal limits
- While measuring the head this was seen, what do you think it is?







Qual max
B53°/V65°
4D Real Time



Default
Qual max
B56°/V65°
4D Real Time



Diagnosis

- Cystic area seen medial to the right eye is a dacryocystocele or cyst of the tear duct.
- This can be confused with frontal encephaloceles.
- However, their location and simple cystic appearance typically helps to distinguish this as benign.
- Physician could see where the cyst had been after delivery.